

2001



annual report  
[www.cityofbryan.net](http://www.cityofbryan.net)

## ***BRYAN MUNICIPAL UTILITIES***



# financial highlights 2001

	2001	2000	Change	% Change
<b>electric department</b>				
OPERATIONS				
Income	<b>\$15,493,281</b>	\$17,684,800	(2,191,519)	(12.4%)
Operating Expenses	<b>12,639,985</b>	13,258,315	(618,330)	(4.7%)
Operating Balance	<b>2,853,296</b>	4,426,485	(1,573,189)	(35.5%)
FINANCE				
Capital Improvements	<b>2,342,718</b>	2,907,046	(564,328)	(19.4%)
Loan Payment	<b>1,550,000</b>	0	1,550,000	
Fund Balance Dec. 31	<b>3,253,951</b>	4,293,373	(1,039,422)	(24.2%)
TOTAL METERS	<b>5,839</b>	5,647	192	3.4%
TOTAL KWHRS (1)	<b>231,430,822</b>	266,582,442	(35,151,620)	(13.2%)
PEAK DEMAND (kilowatts)	<b>42,700</b>	51,800	(9,100)	(17.6%)

(1) Includes line loss and final bills

## water department

OPERATIONS				
Income	<b>\$1,396,270</b>	\$1,310,513	85,757	6.5%
Operating Expenses	<b>1,212,993</b>	1,062,159	150,834	14.2%
Operating Balance	<b>183,277</b>	248,354	(65,077)	(26.2%)
FINANCE				
Capital Improvements	<b>324,208</b>	302,110	22,098	7.3%
Fund Balance Dec. 31	<b>514,994</b>	655,925	(140,931)	(21.5%)
TOTAL METERS	<b>3,733</b>	3,656	77	2.1%
TOTAL GALLONS (2)	<b>638,763,135</b>	619,725,000	19,038,135	3.1%

(2) Includes line loss and backwashes at the water plant

## communications department

OPERATIONS				
Income	<b>\$749,543</b>	\$212,738	\$536,805	252.3%
Operating Expenses	<b>670,506</b>	300,673	369,833	123.0%
Operating Balance	<b>79,037</b>	(87,935)	166,972	(189.9%)
FINANCE				
Capital Improvements	<b>474</b>	328,413	(327,939)	(99.9%)
Fund Balance Dec. 31	<b>150,073</b>	71,510	78,563	109.9%
TOTAL CABLE TV CUSTOMERS	<b>1,755</b>	1,611	144	8.9%
TOTAL INTERNET CUSTOMERS	<b>438</b>	23	415	1804.3%

# letter from the director

*Stephen Casebere  
Director*



January 2001 marked the start of electric restructuring in Ohio. As dictated by the legislation, in June we started to pay a tax on kilowatt hours delivered to end users. Bryan City Council voted to return 100 percent of the tax collected inside the city limits to the electric department. This decision meant we did not need to increase rates to customers inside the city. However, rates for customers outside the city were increased to recover the kilowatt-hour tax paid to the state. The council also voted to return 95 percent of the kilowatt-hour tax to the electric fund for the next four years. This will help keep our electric rates low.

Our power generation also helped maintain low electric rates. In 2001, we were in the third year of a six-year contract with American Municipal Power - Ohio for 22 megawatts of generation capacity. This contract nets us nearly \$1 million annually. The Auglaize Hydroelectric Plant is another means to keep rates low. Construction crews completed the repairs from ice damage to the plant in 1999. We also made many improvements at the same time. The Bryan Board of Public Affairs approved a settlement with Gulf Insurance Co. for \$1.55 million. We then paid that amount on the principal of our loan from AMP-Ohio.

In 2001, the Communication Department added Internet service for our customers. By the end of the year, we had over 400 Internet customers. Our cable Internet provides high-speed access without tying up phone lines. We also ended the year with approximately 1700 cable TV customers. I want to thank our customers for choosing Bryan Municipal Utilities for their communications services. With

continued support, we can provide competition, quality service and affordable rates.

Quality service and a quality product are what our water department has provided since 1892. This year, the Water Department continued implementation of our drinking water protection plan by hiring environmental consultants to construct a new model of our aquifer. We will use the model to identify potential pollution sources and update our wellhead protection plan. In 2001, water distribution crews completed a bore and placed 12-inch water main under the railroad tracks on North Beech Street. Water crews rebuilt and added new water lines north of the railroad tracks. This will supply more water and greater reliability to the northern part of Bryan.

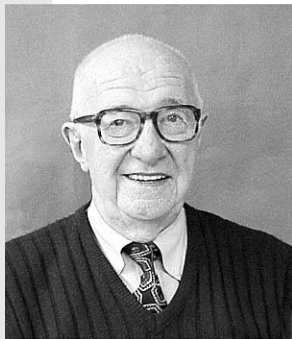
Reliability was also a focus of the electric distribution crews. The Electric Department continued work on upgrading our system from 4 kV to 12kV. This upgrade results in better quality electricity – a more stable voltage with fewer fluctuations. The conversion has been an ongoing project that we will complete in about two years. Power plant crews also worked on reliability by testing and calibrating substation relays and performing an infrared scan of all high voltage equipment and connections at the power plant and substations.

I am proud of our crews and our crews are proud of what they do for you, the owners of Bryan Municipal Utilities.

A handwritten signature in cursive script that reads "Stephen Casebere".

*Director of Utilities  
March 14, 2002*

# Letter from the mayor



*William C. Runkle  
Mayor, 1977 - 2001*

I retired this year after having served as Mayor of Bryan since 1977, and in thinking about the past 24 years, I feel we have accomplished a lot in Bryan during that time. One of the first things that comes to mind is the strong sense of community we have developed. During the blizzard of 1978, I was amazed at how much people got together and helped each other. There was so much sharing for people in need.

During my tenure, one of the city's biggest accomplishments was the expansion of our wastewater treatment plant in the 1980s, using a grant from EPA. We also put a lot of new sewer pipe underground to separate the sanitary sewers from the storm sewers. The city received federal revenue sharing, and with that money, we closed Lynn Run all the way from West High St. to East Perry St. We also closed in a lot of Joe Run and portions of Pigeon Run. We have devoted over \$14 million for sewer improvements.

The city of Bryan has been blessed with many grants from the state and federal government. The state of Ohio paid for half of the ice skating arena. The city bought Stark's Lumber and we used it to start the first recycling center in northwest Ohio. Another great achievement during my time as Mayor was the cooperation between the BPA and City Council to purchase the Industrial and Commercial Complex; grant money was used to build Commerce Drive.

The people of Bryan have invested much in our park system, which includes 11 parks spread over 130 acres. Much of the land was acquired through donations. The system includes pools, pavilions, soccer fields, lighted baseball fields, tennis courts, sledding hill, bike paths, and other facilities. I was especially impressed when all the citizens in Bryan pulled together and built the Imagination Station in three days. Nearly 3,000 people donated time at four hours a shift.

And finally, I marvel at the two youngsters who addressed Bryan City Council in 2000 to propose a skate park. They also collected donations to get the project started. The completed park is a testimony to the benefits of community participation.

Thanks a lot,

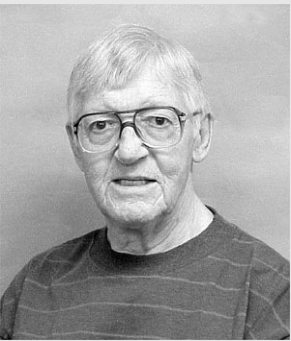
*William C. Runkle*



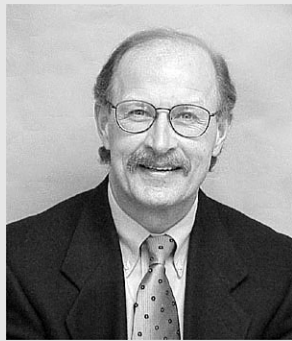
1978 photo courtesy of The Bryan Times



# board of public affairs



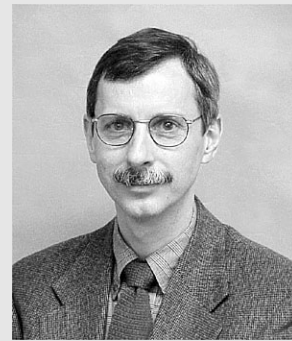
*Bob Hoffman*  
Chair



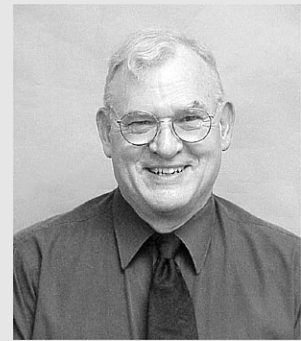
*Chris Conti*



*Mary Burns*



*Lauren Bechtol*



*Tom Foster*

The Bryan Board of Public Affairs can trace its history back to 1892 when a three-member Board of Waterworks Trustees was elected to oversee the construction of the new municipal water system. Bryan formed an electric company in 1896, and it was also put under the management of the waterworks trustees. The board of trustees was abolished in 1902. The village council operated the utilities until 1906 when the Board of Public Affairs was created to manage the municipal water and electric departments.

The Board of Public Affairs has served the city very well since those early days. The board has consistently looked at ways to increase the utility's independence by owning generation assets and constructing its own

infrastructure. Bryan Municipal Utilities is envied by other communities for its low rates, owned assets and vision for the future.

The present board members have over 41 years of combined experience serving the community on the Board of Public Affairs. Tom Foster has served for the past 12 years. Lauren "Skip" Bechtol is in his sixth year and served previously for 10 years from 1973 to 1983. Mary Burns is in her sixth year while Chris Conti and Bob Hoffman are both in their fifth year. Mary, Skip and Bob were re-elected in 2001 to four-year terms starting in 2002 while Chris and Tom were re-elected to terms starting in 2001. The five-member board with this much experience and continuity ensures Bryan Municipal Utilities is set to meet the challenges of the years to come.



*Ed Stokes  
Superintendent  
Power Production*



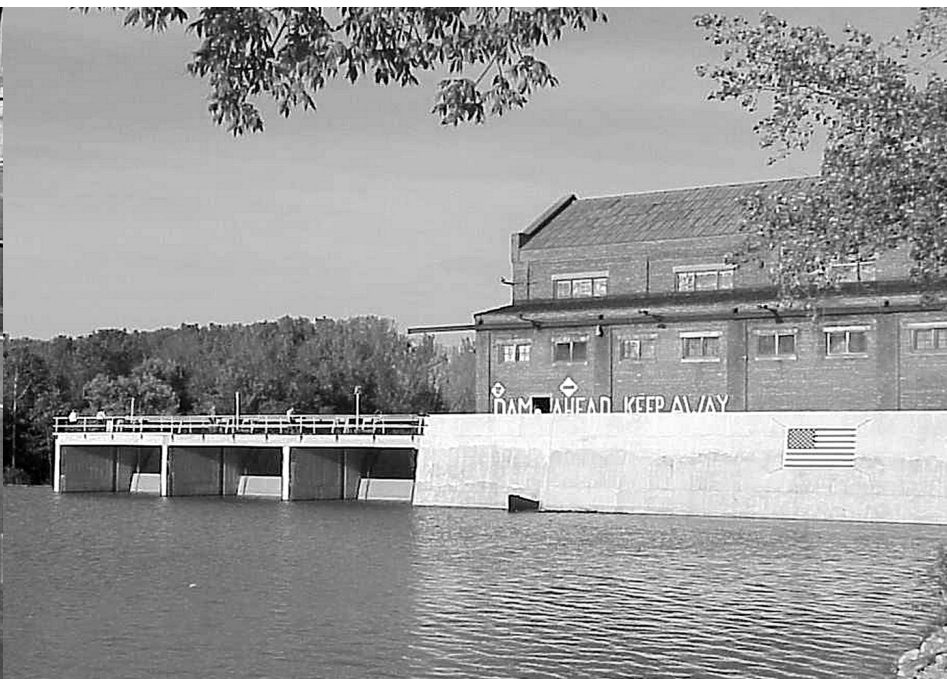
*Dan Froelich  
Superintendent  
Auglaize Hydro Plant*

In 2001, Power Plant personnel focused on maintenance of our generators and substations. A major project was the replacement of the underground fuel line for the Westinghouse turbine generator due to a leak. During the replacement of the fuel line, we relocated one of the fuel pumps to improve fuel delivery during cold weather.

We also completed the installation of the closed loop cooling system for the Nordberg and GE generators at the power plant. The closed loop cooling system replaces the old Marley cooling tower that was originally installed in 1947 but has not been used for several years. The installation of the new system and removal of the old system was completed by the power plant personnel with assistance provided by the Water Department.

This year we completed the installation of an infrared heating system for the power plant building. Operating on natural gas, the infrared system heats more efficiently than convection heaters by heating objects rather than the air.

Maintenance and testing of power plant and substation equipment is very important for reliable operation and personnel safety. Annually, we scan all power plant and substation equipment with an infrared camera that measures the temperature of the device and indicates the condition of the equipment and the action required. We found several devices that required attention and set up a program to address these in the



coming year. We also annually test and calibrate our protective relays. This testing helps minimize power systems interruptions and damage to our equipment. We also test our circuit breakers annually to prevent damage to our electric lines and equipment.

### *Auglaize Hydroelectric Plant*

Repairs to the Auglaize hydro plant were completed in 2001. Crews worked right through one of the harshest winters we had seen in a while. We raced against time to get the piers rebuilt and install the floodgates before spring rains. During the early part of April, contractors made final adjustments to the gates and divers removed sections of the steel cofferdam just in time for the spring runoff.

In September, we installed flashboards on the crest of the spillway. Flashboards raise the water level of the reservoir two feet and

allow us to store additional water for generation. Installing the flashboards gave area residents an opportunity to see the raised elevation of the reservoir and determine what changes they needed to make to their property. We were able to operate with the flashboards in both low-flow and high-flow conditions before we removed them for the winter. They performed well and met our expectations.

We completed repairs to the remainder of the intake area in September and removed the earthen cofferdam in October. With the ice damage repairs completed, our attention returned to the development of additional capacity and production.

In October, we opened the Auglaize plant to the public for the first time as part of our celebration of national Public Power Week. Nearly 400

people took advantage of the opportunity to walk around the plant floor and inspect the turbine generators and the SCADA equipped control room. They also watched the new floodgates in operation.

The plant generated 4,413,762 kilowatt hours during the year. This was above our expectations given the construction that took place during most of the year.

### generation capacity

BMU has almost 40 megawatts of capacity from four generators:

- 2 Westinghouse gas/diesel turbines - 15,730 kW each
- 1 GE gas/diesel turbine - 5,700 kW
- 9-cylinder Nordberg diesel - 2,500 kW

### Auglaize Hydroelectric Plant

- 3 Westinghouse generators - 650 kW
- 1 Westinghouse generator - 1,750kW

### In addition:

- 6 diesel generators - 1,825 kW each  
(owned by OMEGA-JV2)





*Jim Funderburg  
Superintendent*

High speed Internet service dominated 2001 for the Communications Department. The phones started ringing in January and have not stopped since. Over 400 Bryan residents eager for a faster connection to the World Wide Web subscribed to our Internet service in 2001 and that number continues to grow every day.

Part of the popularity of our cable Internet is that it frees phone lines all over Bryan. In addition, cable modems run at speeds ten times faster than conventional phone connections and are always online. Our Internet service became even more popular when we introduced a new lower priced residential service called Basic Internet in July. Basic Internet is not as fast as our high-speed residential service, but faster than dial-up connections. It is the perfect solution for people who want to free up their telephone yet pay as little as \$19 per month for service. We still offer our high-speed residential service for those who want the extra speed for downloading and audio and video streaming. With either service, BMU customers get fast access to their favorite sites.

This year the utility conducted another survey of our communications customers. We asked our customers to give us their opinions on many issues related to services and costs. The results were tabulated and became a part of the communications business plan. We found that our subscribers wanted some additional cable television channels such as



MSNBC, Discovery Health, Biography, National Geographic, HBO Comedy, More Max, and Action Max. We added National Geographic at the end of the year and the others in January of 2002.

In addition, the study confirmed what we already knew — programming costs for cable TV had grown dramatically since we established our rates in 1999. The Board of Public Affairs decided it was time to increase rates in an effort to recover the nearly 35 percent increase we had seen in our programming costs. The rate increase amounted to an additional \$1 or \$2 per month. Our most popular service, Extended Basic (channels 2-86), is still a great bargain at \$27. Both the channel lineup changes and the cost increases took effect in January 2002.

Bryan Municipal Utilities sent TV

cameras to the Rotary Auction held at the ice rink in city park. The annual fundraising event was the first live programming on our community Channel 3 and our coverage was well received. In the past year, we also offered our Channel 4 to the Bryan City Schools for informational programming about the school levy and for broadcasting all the special holiday programs performed by Bryan students.

In the summer, we attempted to extend our cable system to Bona Vista, Norlick, and Lakeland Woods subdivisions. We had the construction materials ready on site, but in August, the bids for the work were over projected estimates and higher than acceptable. Hopefully, we will find some solution and be able to extend our system to nearby subdivisions next summer. Meanwhile, we finished

construction in the area north of the railroad tracks, and thus, completed the fiber system inside the city limits as the year ended.

Overall, it was another busy year for the Communications Department. Especially, it was a year when Internet communications in the city of Bryan became a whole lot faster.

### contact information

Office: 419-633-3031

Monday - Friday, 7:30 a.m. - 6 p.m.

Emergency Service: 419-636-0866

(24 hours a day, 7 days a week)

communications@cityofbryan.com

### Internet

Help Desk: 419-633-0900

Monday - Saturday, 8 a.m. - 10 p.m.

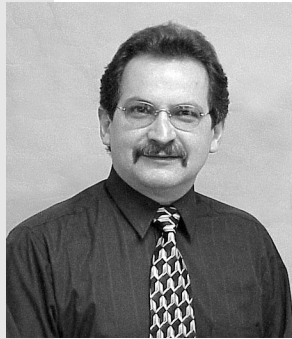
Sunday, 1 p.m. - 10 p.m.

support@cityofbryan.net

[www.cityofbryan.net](http://www.cityofbryan.net)







*Norman Echler  
Superintendent*

To responsibly manage our public water system, the Water Department must concentrate on providing safe drinking water and continually replace or upgrade distribution system infrastructure. In 2001, we replaced major valves at the water plant, installed more than 4,600 feet of new water main and continued studies of our water resources.

This year we replaced all the backwash valves on our two pressure sand filters at the water treatment plant. This was a major undertaking because half of the water plant had to be shut down while the pipes and valves were disconnected. We found cracks in the operating disks of some of these 26-year-old valves that allowed water to leak by while the valves were in the closed position.

The most significant improvements to the distribution system were made in the neighborhood north of the railroad tracks. We installed new water mains on Foster Street, from Cherry Street to Main Street; on North Cherry, from Charles Street to Foster Street; and on North Walnut Street, from Bement Street to Foster Street. A new water line was also installed under the railroad tracks at North Beech Street and Paige Street. We plan to connect this line to the new line at Foster and Main to create a loop feed for adequate fire protection and future growth in Bryan's north side.

Our water crews also installed a new line in the alley west of Portland Street between Mulberry and Trevitt Street to maintain



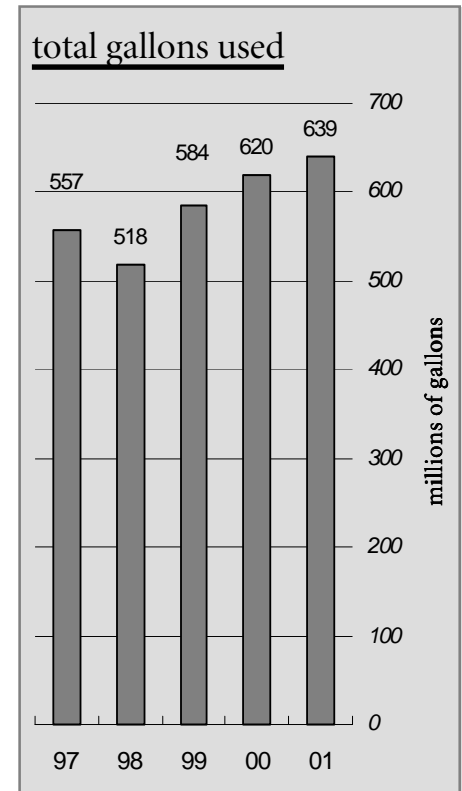
adequate fire protection in this industrial area. In addition, Bryan Municipal Utilities began service to 560 feet of new water main extension on Fountain Grove Drive and 1,350 feet of new water main in Union Place Subdivision.

The Bryan Water Department was instrumental in the formation of The Ohio State University Master Watershed Stewards Training Program. Staff from Bryan Municipal Utilities, OSU Extension, Williams County Soil & Water, Williams County Health Department and concerned citizens from Williams and Defiance counties created an educational program to study the health of local watershed systems. The 50-hour course is open to all interested parties.

In our continuing effort to protect our most valuable natural resource, Bryan Municipal Utilities has hired Bennett & Williams Environmental Consultants

Inc., to create a computer model of our underground aquifer. This three-dimensional model along with pumping tests will help us better understand the characteristics of the flow of water to our wells. The first step in creating a three-dimensional computer model is to design ground water level surface maps of the water table. Each week, utility personnel record the ground water level below the top of each observation well. Other historical information such as daily rainfall and pumping cycle records will be analyzed. Transmissivity or flow velocity can then be determined around each well. This will allow us to determine how fast, how far and from what direction the underground water flows to each city well. All of this information will help us to protect our recharge zones in and around the city and to better understand how much water can safely be withdrawn from the aquifer without overdrafting the resource.

The close of 2001 also marked the retirement of the \$1.5 million debt on the Fountain City Tower. This year the tower received a high-pressure wash to remove mildew that had accumulated during the past 10 years, and once again it looks majestic as it stands over our city.





*Ralph Nicholls  
Superintendent*

The Electric Department worked on several lighting projects this year along with our normal electric conversions and maintenance. In a joint project with city engineering, we upgraded the lighting in the city parking lot on South Lynn Street. The Electric Department removed the overhead wires and installed underground conduit. We placed new underground wires to all the businesses and wired the parking lot lights. The city used a downtown revitalization grant to pay for the lights and the electric crews installed them. The electric department provided the wire, transformer, conduit, and hardware. The project resulted in more attractive and expanded parking lots downtown.

This year the electric department completed a joint venture with the Bryan Historical Homes Association to place antique style lighting in the historic district. The utility assisted with the engineering and purchase of materials for the project and contributed the labor to install the street lamps. The Victorian period lighting fixtures are very attractive and provide an ambience as well as light for the streets and sidewalks.

The electric utility celebrated Public Power Week in October with an open house at the electric warehouse and at the power plant. The third grade classes from Lincoln Elementary School attended safety demonstrations put on by our linemen. We also conducted safety demonstrations for local clubs, scout troops, and other county schools.





Bryan Municipal Utilities purchased a new digger derrick truck in 2001 to replace our 22-year-old digger derrick. We use the digger derrick to set poles, put transformers on poles, and place industrial transformers on concrete pads. We also use it to roll up wire when we do new line construction.

In 2001, we contracted with American Electric Power (AEP) to help us inventory the utility poles in our electric system. This inventory, to be completed in 2002, will result in updated maps of the poles in our system and descriptions of the utilities on each pole. The inventory will also allow us to accurately bill other entities using our utility poles.

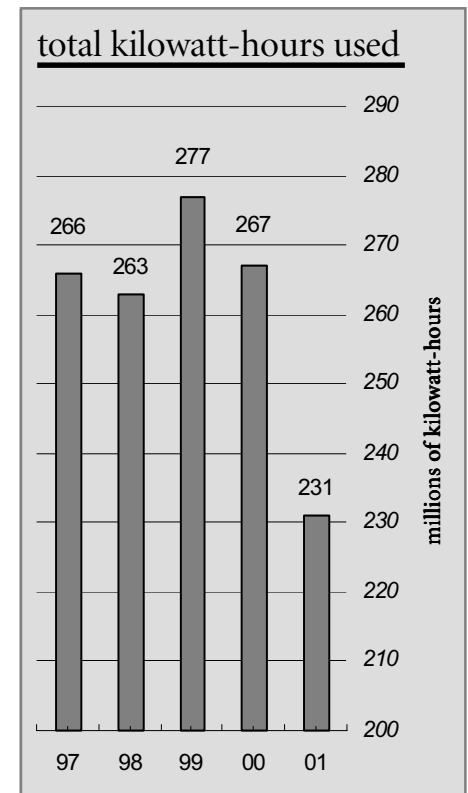
For the last several years, we have contracted with AEP management services to do our line clearance. The tree services crews follow the National Arborist Association tree line clearance guidelines. Since we

have started the program, we have had fewer outages from lightning, ice storms, and windstorms. This contract also frees up our linemen to work on electric projects.

In November, the utility used its electric generators to pick up the city so linemen could replace four insulators on Marquis Corridor. The Marquis Corridor is the 138,000-volt line that connects Bryan's electric system to AEP at the Lockwood Road substation. Crews from AEP and Montpelier assisted with the work on the line. Also on the corridor, the electric department and the water department worked together to replace drainage tile crossing the corridor. Our goal is to replace damaged tiles and remove limbs and debris from the ditches. This will help with surface water drainage during heavy rains.

We continued converting our

electric system from 4,160 volts to 12,470 volts. This will make our system more efficient and able to handle increased loads during the winter and summer months. We are continually upgrading our system to meet the future demands of our community.



# electric

## **2001 operating income and expenses**

---

OPERATING INCOME:	
Charges for Services	\$13,215,647
Other Operating Income	9,541
Total Operating Income	<u>\$13,225,188</u>
OTHER INCOME:	
Interest Income	\$180,224
Hydroelectric Plant Insurance Settlement	1,550,000
Kilowatt Hour Tax Transfer	405,329
Other Miscellaneous Income	132,540
Total Other Income	<u>\$2,268,093</u>
<b>TOTAL INCOME</b>	<b><u>\$15,493,281</u></b>
OPERATING EXPENSES:	
Power Plant Operations	\$7,671,967
Distribution Operations	1,194,693
Billing and Accounting	191,389
Customer Service and Administration	605,590
Maintenance	117,340
Board of Public Affairs	30,024
Electric Communications	441,454
Hydroelectric Plant Operations	219,134
Hydroelectric Plant Repairs	1,173,481
Interest and Fees on AMP-Ohio Loans	479,120
Total Operating Expenses	<u>\$12,124,192</u>
OTHER EXPENSES:	
Kilowatt Hour Tax to State of Ohio	\$36,708
Kilowatt Hour Tax to General Fund	466,349
Transfer to Generator Maintenance Fund	12,736
Total Other Expenses	<u>\$515,793</u>
<b>TOTAL EXPENSES</b>	<b><u>\$12,639,985</u></b>
<b>BALANCE AVAILABLE FOR DEBT SERVICE AND CAPITAL IMPROVEMENTS</b>	<b><u>\$2,853,296</u></b>
CAPITAL IMPROVEMENTS:	
Power Plant	\$164,226
Distribution	500,343
Billing and Accounting	0
Customer Service and Administration	211,574
Electric Communications	1,359,773
Hydroelectric Plant	106,802
Total Capital Improvements	<u>\$2,342,718</u>
DEBT SERVICE: (1)	
Balance January 1, 2001	\$9,000,000
Principal Payment August 23, 2001	1,550,000
Balance December 31, 2001	<u>\$7,450,000</u>

(1) As of December 31, 2001, the Electric Utility has \$7.45 million in outstanding loans with AMP-Ohio. These loans were used for Auglaize Hydroelectric Plant upgrades, communications system installation and other electric system improvements.

# electric

## 2001 fund transactions and balances

	BALANCE (1) Dec. 31, 2000	INCOME	EXPENDITURES	CAPITAL & DEBT SERVICE	BALANCE Dec. 31, 2001
Electric Fund	\$4,293,373	\$15,493,281	\$12,639,985	\$3,892,718	\$3,253,951
Utility Deposit Fund	123,377	43,395	37,815	0	128,957
Generator Maintenance	32,718	12,736	0	0	45,454
<b>TOTAL</b>	<b>\$4,449,468</b>	<b>\$15,549,412</b>	<b>\$12,677,800</b>	<b>\$3,892,718</b>	<b>\$3,428,362</b>

(1) Beginning balances were adjusted to reflect corrections for fiscal year 2000

# generation

## 2001 power production data

Gross Kilowatt Hours Generated by Power Plant	334,900
Gross Kilowatt Hours Generated by Auglaize Hydro	4,413,762
<b>Total Gross Kilowatt Hours Generated</b>	<b>4,748,662</b>
Kilowatt Hours Purchased from:	
American Electric Power (AEP)	214,980,390
Belleville Hydroelectric Project (JV5)	7,784,749
New York Power Authority (NYPA)	3,917,021
<b>Total of Gross Kilowatt Hours Purchased</b>	<b>226,682,160</b>
<b>Gross Generated and Purchased Kilowatt Hours</b>	<b>231,430,822</b>
Customer Metered Kilowatt Hours	218,545,774
Power Plant Use	1,105,100
Kilowatt Hour Line Loss (5.09%)	11,779,948
<b>Total Metered and Line Loss</b>	<b>231,430,822</b>

# communications

## 2001 operating income and expenses

OPERATING INCOME:		
Charges for Services		\$701,607
Other Operating Income		5,664
Total Operating Income		<u>\$707,271</u>
OTHER INCOME:		
Interest Income		\$3,265
Other Miscellaneous Income		39,007
Total Other Income		<u>\$42,272</u>
<b>TOTAL INCOME</b>		<b><u>\$749,543</u></b>
OPERATING EXPENSES:		
Supply and Distribution		\$658,516
Billing and Accounting		11,990
<b>TOTAL EXPENSES</b>		<b><u>\$670,506</u></b>
<b>BALANCE AVAILABLE FOR DEBT SERVICE AND CAPITAL IMPROVEMENTS</b>		<b><u>\$79,037</u></b>
CAPITAL IMPROVEMENTS:		
Total Capital Improvements		\$474

## 2001 fund transactions and balances

	BALANCE (1) Dec. 31, 2000	INCOME	EXPENDITURES	CAPITAL	BALANCE Dec. 31, 2001
Communications Fund	\$71,510	\$749,543	\$670,506	\$474	\$150,073
Construction Fund	234,653	7,028	164,916	0	76,765
<b>TOTAL</b>	<b>\$306,163</b>	<b>\$756,571</b>	<b>\$835,422</b>	<b>\$474</b>	<b>\$226,838</b>

(1) Beginning fund balances were adjusted to reflect corrections for fiscal year 2000

## 2001 communications customer data

	Cable TV	Internet
Residential	1,705	385
Commercial/Industrial	40	42
City of Bryan	10	11
<b>TOTAL</b>	<b>1,755</b>	<b>438</b>

# water

## 2001 operating income and expenses

OPERATING INCOME:	
Charges for Services	\$1,326,766
Other Operating Income	10,428
Total Operating Income	\$1,337,194
OTHER INCOME:	
Interest Income	\$22,557
Other Miscellaneous Income	36,519
Total Other Income	59,076
<b>TOTAL INCOME</b>	<b>\$1,396,270</b>
OPERATING EXPENSES:	
Supply and Distribution	\$833,644
Billing and Accounting	87,852
Customer Service and Administration	128,676
Total Operating Expenses	\$1,050,172
OTHER EXPENSES:	
Transfer to Water Tower Debt Service Fund	\$162,821
<b>TOTAL EXPENSES</b>	<b>\$1,212,993</b>
<b>BALANCE AVAILABLE FOR DEBT SERVICE AND CAPITAL IMPROVEMENTS</b>	<b>\$183,277</b>
CAPITAL IMPROVEMENTS:	
Supply and Distribution	\$298,164
Billing and Accounting	0
Customer Service and Administration	26,044
Total Capital Improvements	\$324,208

## 2001 fund transactions and balances

	BALANCE (1) Dec. 31, 2000	INCOME	EXPENDITURES	CAPITAL	BALANCE Dec. 31, 2001
Water Fund	\$655,925	\$1,396,270	\$1,212,993	\$324,208	\$514,994
Utility Deposit Fund	123,377	43,395	37,815	0	128,957
<b>TOTAL</b>	<b>\$779,302</b>	<b>\$1,439,665</b>	<b>\$1,250,808</b>	<b>\$324,208</b>	<b>\$643,951</b>

(1) Beginning balances were adjusted to reflect corrections for fiscal year 2000

## 2001 water production data

	METERS	GALLONS USED
Residential	3,052	176,312,072
Commercial	530	60,415,960
Industrial	110	246,032,160
City of Bryan	41	11,829,996
Filter Backwash Water	-	3,726,900
<b>Total</b>	<b>3,733</b>	<b>498,317,088</b>
Line Flushing, Losses, Fire Fighting (22%)		140,446,047
<b>Total Metered and Line Loss in Gallons</b>		<b>638,763,135</b>

# five year utility summary

	2001	2000	1999	1998	1997
<b>electric department</b>					
FINANCES					
Income	\$15,493,281	\$17,684,800	\$15,516,414	\$14,262,914	\$15,006,537
Expenses	12,639,985	13,258,315	12,080,495	9,928,878	12,505,901
Capital Improvements	2,342,718	2,907,046	5,729,232	2,082,701	2,511,282
Fund Balance Dec. 31	3,253,951	4,293,373	2,768,628	5,061,941	2,810,606
METERS					
Residential	4,892	4,778	4,580	4,572	4,514
Commercial	707	694	660	641	634
Industrial	42	41	45	43	42
Municipal	9	12	8	7	8
Free Service	188	121	77	66	61
AMP-Ohio	1	1	1	1	2
<b>TOTAL METERS</b>	<b>5,839</b>	<b>5,647</b>	<b>5,371</b>	<b>5,330</b>	<b>5,261</b>
KWHRS USED					
Residential	45,915,090	41,957,508	44,028,290	42,924,990	42,210,380
Commercial	30,418,806	30,613,240	27,560,468	27,440,026	25,984,102
Industrial (1)	137,135,627	173,984,950	187,057,663	184,036,405	180,618,628
Free Service	6,948,823	8,845,339	7,434,962	8,673,544	5,809,551
AMP-Ohio	88,000	804,000	3,549,000	2,294,000	7,024,420
<b>TOTAL KWHRS (2)</b>	<b>231,430,822</b>	<b>266,582,442</b>	<b>277,236,289</b>	<b>263,312,759</b>	<b>265,681,131</b>
PEAK DEMAND (kilowatts)	42,700	51,800	49,700	43,400	41,900

(1) Reduction in 2001 sales reflects transfer of large industrial customer to Holiday City

(2) Includes line loss and final bills

## **water department**

FINANCES					
Income	\$1,396,270	\$1,310,513	\$1,371,455	\$1,248,883	\$1,096,834
Expenses	1,212,993	1,062,159	1,093,212	1,062,913	1,016,302
Capital Improvements	324,208	302,110	241,173	142,139	119,178
Fund Balance Dec. 31	514,994	655,925	711,505	672,733	628,902
METERS					
Residential	3,052	2,974	2,842	2,840	2,815
Commercial	530	535	504	502	502
Industrial	110	108	106	106	102
Free Service	41	39	39	38	39
<b>TOTAL METERS</b>	<b>3,733</b>	<b>3,656</b>	<b>3,491</b>	<b>3,486</b>	<b>3,458</b>
GALLONS USED					
Residential	176,312,072	173,375,724	180,841,716	168,851,276	170,007,684
Commercial	60,415,960	60,682,452	64,325,008	65,438,032	60,794,448
Industrial	246,032,160	223,938,144	238,590,308	273,022,244	246,447,300
Free Service	11,829,996	9,654,912	8,957,300	7,232,412	8,352,168
<b>TOTAL GALLONS (3)</b>	<b>638,763,135</b>	<b>619,725,000</b>	<b>584,463,000</b>	<b>517,596,939</b>	<b>556,719,982</b>

(3) Includes line loss and backwashes at the water plant

# free-of-charge utility services

## utilities

	ELECTRICITY	WATER	COMMUNICATIONS
Street and Security Lights	\$157,778	\$0	\$0
Utility Departments, Building & Facilities	108,487	9,991	750
Parks, Pools & Other Recreational Areas	27,998	9,093	0
Bryan Community Center	3,973	198	0
Municipal Departments, Buildings & Facilities	52,715	6,175	29,351
County and EMS	1,390	176	0
Traffic Signals	6,791	0	0
Fiber Nodes	31,479	0	0
Bryan City Schools	1,363	0	26,100
Day in the Park, Jubilee	755	137	0
<b>Free-of-Charge Utilities</b>	<b>\$392,729</b>	<b>\$25,770</b>	<b>\$56,201</b>

## electric services

MAINTENANCE SERVICES (LABOR) PROVIDED		
Street Light Installation and Maintenance		\$10,229
Traffic Light Installation and Maintenance		10,647
Lighting for Bryan Parks Installation and Maintenance		389
Christmas Decorations		5,184
Equipment		40,730
Unbilled Maintenance (Labor) Provided including Equipment		\$67,179
MATERIALS PROVIDED		
New Street Lights and Replacements		\$17,953
Unbilled Materials Provided		\$17,953
Unbilled Electricity		\$392,729
<b>TOTAL FREE LABOR, MATERIALS AND ELECTRICITY</b>		<b>\$477,861</b>

## water services

MAINTENANCE SERVICES (LABOR) PROVIDED		
Installation and Services to City Facilities		\$3,115
Installation and Maintenance of Fire Hydrants		17,128
Unbilled Maintenance (Labor) Provided		\$20,243
MATERIALS PROVIDED		
Water Lines and Services to City Facilities		\$1,900
New Fire Hydrants and Replacements		10,318
Unbilled Materials Provided		\$12,218
Unbilled Water		\$25,770
<b>TOTAL FREE LABOR, MATERIALS AND WATER</b>		<b>\$58,231</b>

## communications services

MAINTENANCE SERVICES (LABOR) PROVIDED		
Installation of Services to City Facilities		\$2,600
Installation of Services to Bryan City Schools		1,250
Unbilled Maintenance (Labor) Provided		\$3,850
MATERIALS PROVIDED		
Cable and Accessories for Services to City Facilities		\$940
Cable and Accessories for Services to Bryan City Schools		325
Unbilled Materials Provided		\$1,265
Unbilled Communications Services		\$56,201
<b>TOTAL FREE LABOR, MATERIALS AND COMMUNICATIONS</b>		<b>\$61,316</b>

## TOTAL FREE-OF-CHARGE UTILITY SERVICES

**\$597,408**



## **BRYAN MUNICIPAL UTILITIES**

841 East Edgerton St.  
Bryan, OH 43506-1413

Presorted  
Standard  
U.S. Postage Paid  
Bryan, OH  
Permit No. 128

*reliable, local, yours*

For additional financial reports, please visit our Web site:

**[www.cityofbryan.net](http://www.cityofbryan.net)**

or contact our office

### **contact information**

utility office	419-636-1559
after hours service	419-636-0866

[utility@cityofbryan.com](mailto:utility@cityofbryan.com)

